



# **Opportunities at 16+ 18<sup>th</sup> January 2024 Internal Candidates**

**Miss Helen Barton – Headmistress**

Ms Georgina Peters – Director of Sixth Form Education

# Headmistress - Miss Barton



# By the end of this evening we hope that you will.....



- Understand the St George's Sixth Form 'package' and what we expect of our students
- Have confirmed how to apply for a place in our Sixth Form
- Understand the admissions criteria for entry
- Know how to make the most of the next few weeks as you make some important decisions

# Why study at St George's Sixth Form

- **Excellent academic outcomes** - top 15% nationally at KS5
- Exceptional **House pastoral system** with outstanding House events
- Extensive **leadership opportunities**
- Excellent **post-18** support and guidance
- Extensive **supra-curricular opportunities** on offer
- Sixth Form **Social Events**
- Dedicated and highly knowledgeable teachers who **love** their subjects
- Continued.....outstanding House pastoral provision, 'Service above Self' ethos & St George's family

# Key staff



Mr Muriss  
Head of Grant



Mr Harris  
Head of Watts



Mr Ede  
Head of Monk



Mr Day  
Head of Goddard



Mr Ellis  
Deputy  
Director of  
Sixth Form



Mrs Beaman  
Sixth Form  
Operational  
Coordinator



Miss Borland  
Director of  
Boarding

# Exam results 2023\*

*\*return to pre-pandemic grading*



- These results were **very high**.
- 41% of students achieved A\*-A grades  
(15 students achieved **ALL** A/A\* grades)
- 68% of students achieved A\*-B grades

**We are not an exam factory**



# Post-18 Success 2023

## A diverse range of destinations and courses

- **Oxbridge places:** 5/7 students gained a place at Oxbridge
- **Medidentivet places:** 5/7 students gained a place to study Medicine/Dentistry/Veterinary
- 84% of students were accepted into their **first choice university** (over half of onto **Russell Group** universities)
- In the last few years students have also gained **apprenticeship places** with PwC, JP Morgan, L'Oreal and other high profile firms.

# Suited to those who.....

- Relish the **challenge** of learning and academic study
- Thrive under **high expectations** – strong work ethic, conduct and dress code
- Are happy in a **structured** environment but are **independent learners**
- Want to be a **role model** for the rest of the school
- Are willing to **contribute** to the school community and commit to the '**complete package**'





# St George's Sixth Form: key facts

- **4 lessons** per subject
- **All** students participate in **Sixth Form Games**, **Friday 5 Enrichment programme** and a **Study Skills programme** (08.30-3.20pm and more!!)
- **Strict dress code & code of conduct** policy
- **Mentoring** a Year 7 student in the Autumn Term & **in-class support** once a week



**Questions you need to ask yourself....**

**Is St George's Sixth Form  
right for me?**

**Will I thrive here?**

# What do you need to gain a place in our Sixth Form?



- A **minimum** of 5 full GCSEs grades 9-5
- These **must** include 5 in English (language or literature) and Maths
- Three of your GCSE grades must be **at least** grade 6
- Fulfil the individual **course entry requirements** for each A Level course that you wish to apply for  
Eg. Maths – min grade 7 & F Maths - min grade 8  
Eg. Sciences – minimum grade 6 *and* minimum grade in Maths 6

**(please refer to the sixth form prospectus)**



# Three or Four A levels?

- **Three subjects** (exception: Maths and Further Maths\*)
- **Linear A Levels** - no one 'drops' a subject, so choose wisely!
- If you want to do **something extra** – Gold DoE / Floreat Obridge course / work experience / volunteering / Core Maths / EPQ etc

*\*only students with an exceptional GCSE grade profile would be allowed to take four*

# Core Maths - L3 supplementary qualification

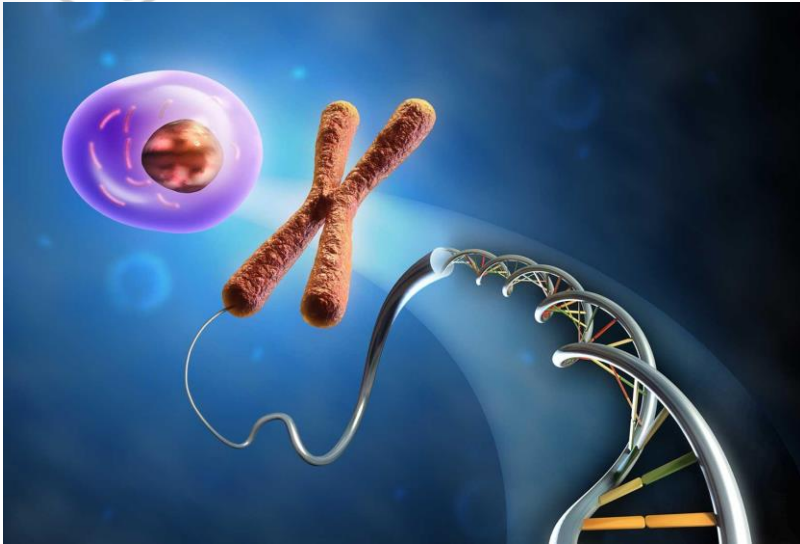


- For students who **wish to continue with their mathematical studies**, but do not wish to take A Level Maths.
- **Maths in real life:** political, economical, environmental and statistical problems.
- **1 year**
- **Complements other A Level subjects:** Geography, Psychology, Biology, Business and Economics
- **Drop in - Watts 11**





# Example course requirement





# Example course requirement

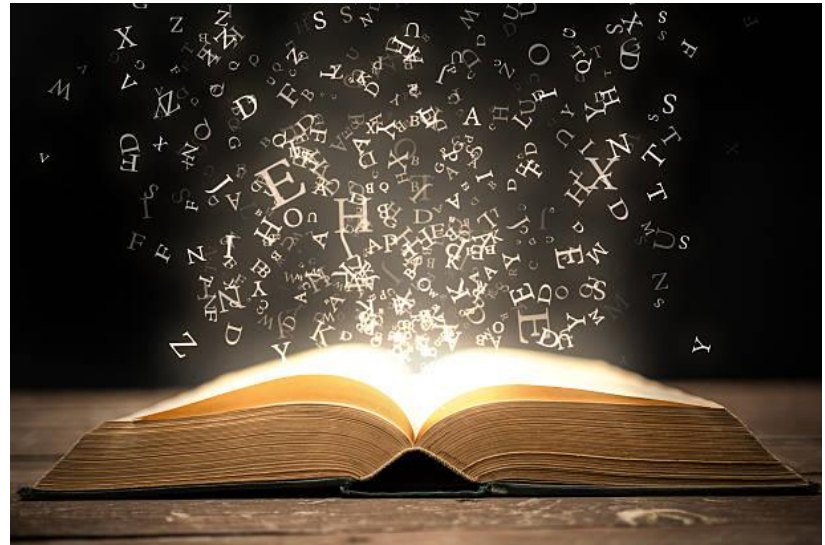


$$\frac{\partial}{\partial a} \ln f_{a, \sigma^2}(\xi_1) = \frac{(\xi_1 - a)}{\sigma^2} f_{a, \sigma^2}(\xi_1) = \frac{1}{\sqrt{2\pi\sigma}} \exp\left\{-\frac{(\xi_1 - a)^2}{2\sigma^2}\right\}$$
$$\int_{\mathcal{R}_n} T(x) \cdot \frac{\partial}{\partial \theta} f(x, \theta) dx = M\left(T(\xi) \cdot \frac{\partial}{\partial \theta} \ln L(\xi, \theta)\right)$$
$$\int_{\mathcal{R}_n} T(x) \cdot \left(\frac{\partial}{\partial \theta} \ln L(x, \theta)\right) \cdot f(x, \theta) dx = \int_{\mathcal{R}_n} T(x) \cdot \left(\frac{\partial}{\partial \theta} \frac{f(x, \theta)}{f(x, \theta)}\right) \cdot f(x, \theta) dx$$





# Example course requirement







# Harpenden Consortium

- **Some courses are only** available through the Harpenden Consortium: us, SJL, RPS & KWS  
Eg. Media, German, Spanish, Chinese\* A Levels  
Eg. Food & Sci Diploma\*, Health & Social Care BTEC, IT BTEC, Performing Arts BTEC\*, Sport & Exercise Activity CTEC\*
- Dependent on whether there is space
- Transport is **not** provided
- Majority of subjects need to be at the “home school”

*\*new this year*



# Q+A with Year 12 Students

Laila  
Molly  
Mirabel  
Inaaya  
Ben  
Grace



# Next Steps.....



- Take Ownership – Your Future
- Read the Prospectus and Learning Contract
- Look at **entry requirements** for courses
- **Talk** to family, your teachers and your tutor
- **Talk** to the sixth formers and sixth form staff
- Attend the **A level subjects Fair** – lunchtime on Monday in the Assembly Hall
- Attend **A level subject Q+A drop-in** - lunchtime on Tuesday-Friday
- Have a **Plan B**

**Success = getting the right students on the right courses!**



## Things to note....

- We want you back **if** St Georges Sixth Form is the **right place** for you and you will **thrive!**
- Our Sixth form classes have a **broad ability profile**
- You will **not** allowed to join if you have not met the entry requirements.
- Option choices will be passed to your **Head of House and Subject Leaders** to consider.



# The Options Form

- **Online Options form** – completed by student
- **Must** be completed and submitted **in one go**  
– no option to save and come back to finish later
- Choose **3 subjects** for which you love and are on course trajectory to achieve the entry grades
- Always include a **reserve** choice

Do not forget your **Plan B**



# Application Deadline

**Friday 16<sup>th</sup> February 2024 - 09.00**

The Internal Sixth Form Options application form can be found in:

**[Home>Join Us>Sixth Form Admissions>Internal Sixth Form Options Form](#)**

Subject videos are also available to watch until 20<sup>th</sup> February:

**[School Website \(Home>Menu>Sixth Form>Opportunities at 16+](#)**

# Extra help

Boarding specific questions:

[boarding@stgeorges.herts.sch.uk](mailto:boarding@stgeorges.herts.sch.uk)

Sixth form general:

[6thformadmin@stgeorges.herts.sch.uk](mailto:6thformadmin@stgeorges.herts.sch.uk)



# **Opportunities at 16+ 18<sup>th</sup> January 2024**

Thank you for joining us