



Opportunities at 16+ 18th January 2024 External Candidates

Miss Helen Barton – Headmistress

Ms Georgina Peters – Director of Sixth Form Education

Headmistress - Miss Barton



By the end of this evening we hope that you will.....



- Understand what the 'St George's Sixth Form 'package' is and what we expect of our students
- Know whether this school is a good fit for you
- Have confirmed how to apply for a place in our Sixth Form
- Understand the admissions criteria for entry
- Know how to make the most of the next few weeks as you make some important decisions

Why study at St George's Sixth Form



- **Excellent academic outcomes** - top 15% nationally at KS5
- Exceptional **House pastoral system** with outstanding House events
- Extensive **leadership opportunities**
- Excellent **post-18** support and guidance
- Extensive **supra-curricular opportunities** on offer
- Sixth Form **Social Events**
- Dedicated and highly knowledgeable teachers who **love** their subjects
- **'Service above Self' ethos & community spirit** – St George's family

Key staff



Mr Muriss
Head of Grant



Mr Harris
Head of Watts



Mr Ede
Head of Monk



Mr Day
Head of Goddard



Mr Ellis
Deputy
Director of
Sixth Form



Mrs Beaman
Sixth Form
Operational
Coordinator



Miss Borland
Director of
Boarding

Exam results 2023*

**return to pre-pandemic grading*



- These results were a **very high**.
- 41% of students achieved A*-A grades
(15 students achieved **ALL** A/A* grades)
- 68% of students achieved A*-B grades

We are not an exam factory



Post-18 Success 2023

A diverse range of destinations and courses

- **Oxbridge places:** 5/7 students gained a place at Oxbridge
- **Medidentivet places:** 5/7 students gained a place to study Medicine/Dentistry/Veterinary
- 84% of students were accepted into their **first choice university** (over half of onto **Russell Group** universities)
- In the last few years students have also gained **apprenticeship places** with PwC, JP Morgan, L'Oreal and other high profile firms.

Suited to those who.....



- Relish the **challenge** of learning and academic study
- Thrive under **high expectations** - strong work ethic, conduct and dress code
- Are happy in a **structured** environment but are **independent learners**
- Want to be a **role model** for the rest of the school
- Are willing to **contribute** to the school community and commit to the '**complete package**'

St George's Sixth Form: key facts



- **4 lessons** per subject
- **All students** participate in **Sixth Form Games**, **Friday 5 Enrichment programme** and a **Study Skills programme** (08.30-3.20pm and more!!)
- **Strict dress code & code of conduct** policy
- **Mentoring** a Year 7 student in the Autumn Term & **in-class support** once a week

**Questions you need to ask
yourself....**



**Is St George's Sixth Form
right for me?**

Will I thrive here?

What do you need to gain a place in our Sixth Form?



- A **minimum** of 5 full GCSEs grades 9-5
- These **must** include 5 in English (language or literature) and Maths
- Three of your GCSE grades must be **at least** grade 6
- Fulfil the individual **course entry requirements** for each A Level course that you wish to apply for
Eg. Maths – min grade 7 & F Maths - min grade 8
Eg. Sciences – minimum grade 6 *and* minimum grade in Maths 6

(please refer to the sixth form prospectus)



Three or Four A levels?

- **Three subjects** (exception: Maths and Further Maths*)
- **Linear A Levels** - no one 'drops' a subject, so choose wisely!
- If you want to do **something extra** – Gold DoE / Floreat Obridge course / work experience / volunteering / Core Maths / EPQ etc

**only students with an exceptional GCSE grade profile would be allowed to take four*

Core Maths - L3 supplementary qualification

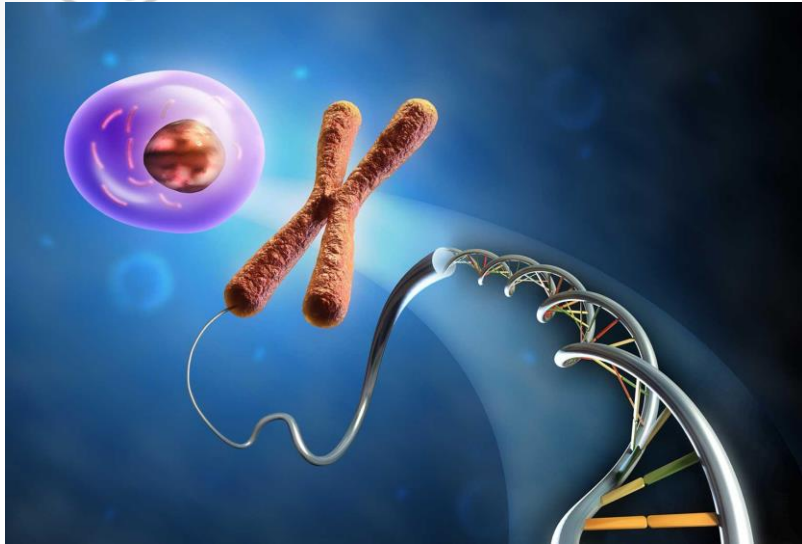


- For students who **wish to continue with their mathematical studies**, but do not wish to take A Level Maths.
- **Maths in real life:** political, economical, environmental and statistical problems.
- **1 year**
- **Complements other A Level subjects:** Geography, Psychology, Biology, Business and Economics
- **Drop in - Watts 11**





Example course requirement





Example course requirement

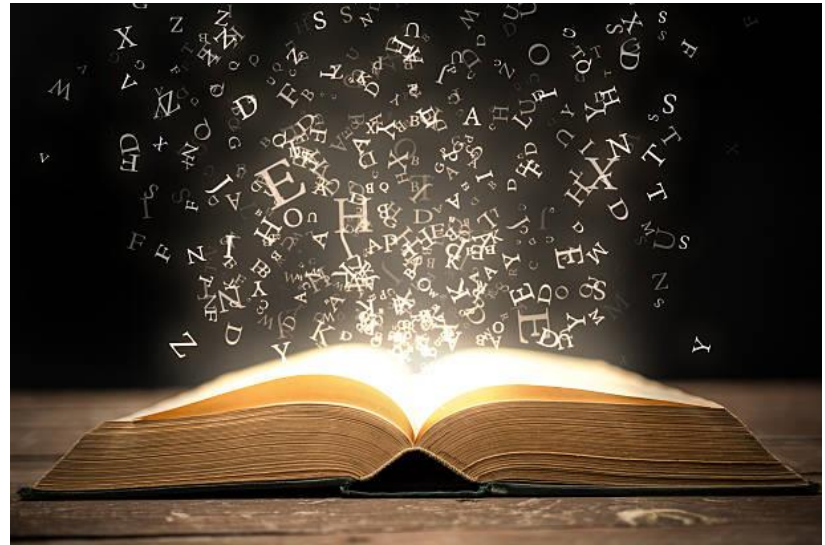


$$\frac{\partial}{\partial a} \ln f_{a, \sigma^2}(\xi_1) = \frac{(\xi_1 - a)}{\sigma^2} f_{a, \sigma^2}(\xi_1) = \frac{1}{\sqrt{2\pi\sigma}} \exp\left\{-\frac{(\xi_1 - a)^2}{2\sigma^2}\right\}$$
$$\int_{\mathcal{R}_n} T(x) \cdot \frac{\partial}{\partial \theta} f(x, \theta) dx = M\left(T(\xi) \cdot \frac{\partial}{\partial \theta} \ln L(\xi, \theta)\right)$$
$$\int_{\mathcal{R}_n} T(x) \cdot \left(\frac{\partial}{\partial \theta} \ln L(x, \theta)\right) \cdot f(x, \theta) dx = \int_{\mathcal{R}_n} T(x) \cdot \left(\frac{\partial}{\partial \theta} \frac{f(x, \theta)}{f(x, \theta)}\right) \cdot f(x, \theta) dx$$





Example course requirement



Harpenden Consortium



- **Some courses are only** available through the Harpenden Consortium: us, SJL, RPS & KWS
Eg. Media, German, Spanish, Chinese* A Levels
Eg. Food & Sci Diploma*, Health & Social Care BTEC, IT BTEC, Performing Arts BTEC*, Sport & Exercise Activity CTEC*
- Dependent on whether there is space
- Transport is **not** provided
- Majority of subjects need to be at the “home school”

**new this year*



Number of places to be offered to external applicants

- Approximately 60 day places will be offered.
- Up to 12 boarding places will be offered
- We can only “over-offer” if there is space in the subject classes for which the student has applied
- “Tie-break rules” are in the admissions policy *(please refer to the website)*



Q+A with Year 12 Students

Laila
Molly
Mirabel
Inaaya
Ben
Grace





The Options Form

- **Online Options form** – completed by student
- **Must** be completed and submitted **in one go** – no option to save and come back to finish later
- Choose **3 subjects** for which you love and are on trajectory to achieve the entry grades
- Include a **reserve** choice



Application Deadline

Friday 2nd February 2024 - 09.00

The External Sixth Form Options application form can be found in:

**School Website: [Home](#)>[Join Us](#)>[Sixth Form Admissions](#)>
[External Sixth Form Day Applicants](#)**

Subject videos are also available to watch:

School Website: [Home](#)>[Menu](#)>[Sixth Form](#)>[Opportunities at 16+](#)

Please note, the boarding application process is a stand alone process (Mrs Styles)



Important Notices

- **Compulsory** Induction Days in June and September

Please note:

“Enrolment into Sixth Form at St George’s school closes at the end of the first full week of Autumn Term. After this time all outstanding offers will be withdrawn”

Extra help

Boarding specific questions:

boarding@stgeorges.herts.sch.uk

Sixth form general:

6thformadmin@stgeorges.herts.sch.uk



Opportunities at 16+ 18th January 2024

Thank you for joining us